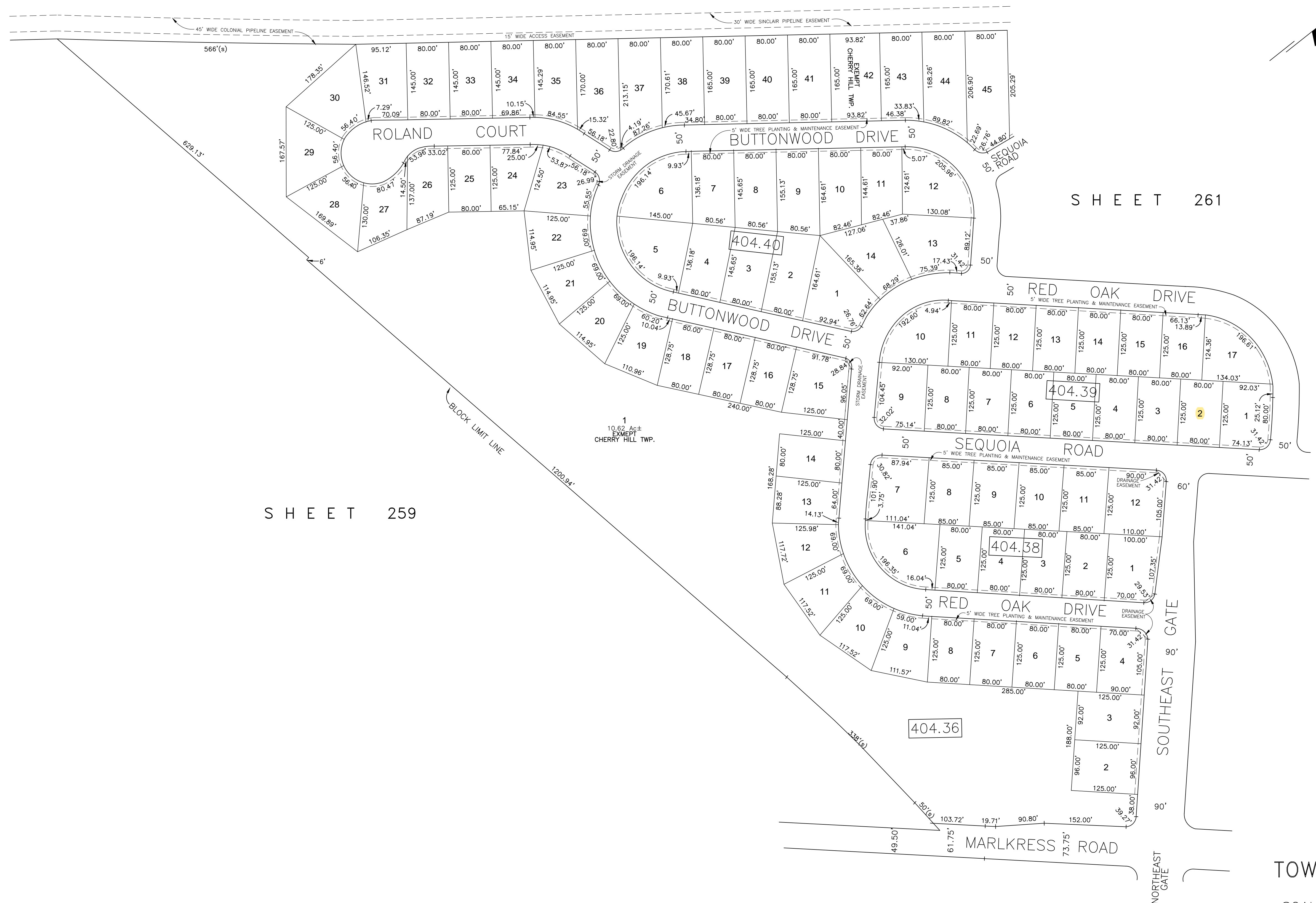
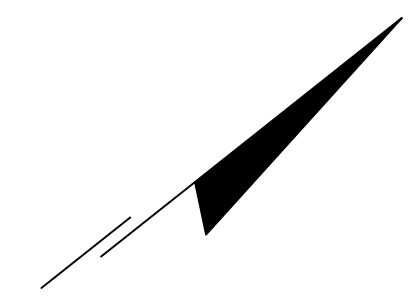


SHEET 217

NEW JERSEY TURNPIKE

337.5'



SHEET 261

SHEET 259

SHEET 261

SHEET 258

TAX MAP
 TOWNSHIP OF CHERRY HILL
 CAMDEN COUNTY, NEW JERSEY
 SCALE: 1"=100' 10/1/02
 William E. Alburger, P.L.S.
 JCA ASSOCIATES, INC.
 1256 NORTH CHURCH STREET, SUITE 3
 MOORESTOWN, NEW JERSEY

THIS SHEET HAS BEEN DRAWN USING COMPUTER AIDED DRAFTING/DESIGN (CAD/D).